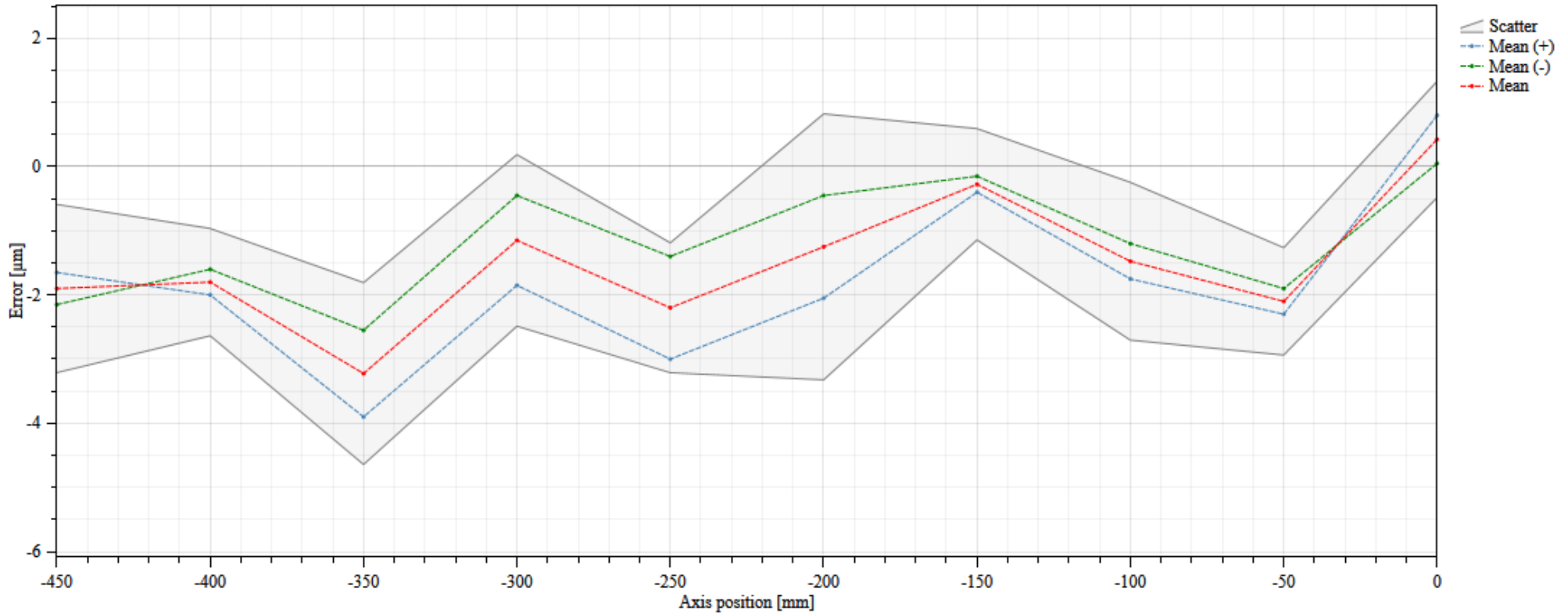


<b>Machine name</b>	-----	<b>Serial number</b>	----	<b>Targets</b>	10 Linear
<b>Axis under test</b>	X	<b>Number of runs</b>	2 Alternate bidir	<b>Test date</b>	27-09-2023 01:30 PM



**EXX - Analysis features**

Name	Value (µm)
Maximum reversal (U max)	1.6
Maximum scatter (Ps max)	2.5
Mean reversal (U Mean)	0.9
Mean scatter (Ps mean)	1.5
Positional uncertainty (P)	6.0
Positional deviation (Pa)	3.7

**Environmental conditions**

Name	Start	End	Min	Max
Air temp [°C]	34.0	34.0	34.0	34.0
Air pressure [mbar]	100.12	100.12	100.12	100.12
Air humidity [%RH]	65	66	65	66
Material temp 1 [°C]	Not recorded	Not recorded		
Material temp 2 [°C]	31.8	31.8	31.8	31.8
Material temp 3 [°C]	Not recorded	Not recorded		
Expansion coefficient [ppm/°C]	11.70	11.70		